

DIVISION 1 - UNGULATES

Shifts times	7:00am - 3:20pm or 8:00am - 4:20pm
Commitment	12 months. Successful applicants will be expected to attend all rostered shifts, with the exception of sickness, holidays or special events.
Shifts available	1 regular day per week OR 1 regular day per fortnight Monday to Sunday
Duration	12 Months with option to re-apply

Key information – Ungulates (Hoofed animals)



Average of 18,000 steps per day



Rain, Hail or Shine



Physically demanding



Lots of raking and cleaning

The volunteer role

- Volunteers must be physically fit and capable
- Lifting heavy bags and Wheelbarrows
- Lots of raking involved
- Some public interaction
- Volunteers will be working alongside the Keepers in all conditions – Rain, hail or shine
- Working in with hazardous animals
- Some animal observations

Main Animals on this Division

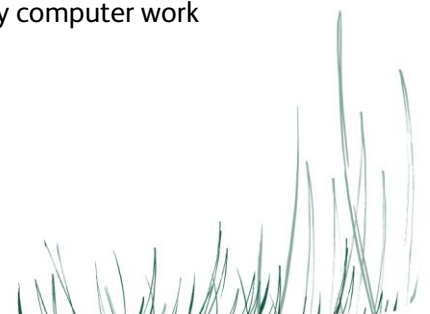
- Fallow Deer
- Takhi
- Ostrich
- Onager
- Barbary Sheep
- Camels
- Symitar horned oryx

Other Animals Include: Giraffe, White Rhino, Bongo, Hippo, Zebra and Addax

What does an average day look like?

(Note: Start time varies pending daylight savings)

- 6:50 -7:00am - Arrive at keepers office and prepare for day (change boots, sign in, get radio)
- 7:00 -10:50 - Check animals on section, cleaning exhibits and night yards (raking, sweeping, picking up faeces), food preparation and distribution (Check and change out hay, prepare special diets, feed out).
- 10:50 -11:15 - Morning Tea
- 11:15 -1:15 - Complete left over cleaning tasks from morning, cut browse, prepare enrichment, maintenance tasks (clean truck, bait stations, clean work areas). Complete reports or any computer work
- 1:15 -2:00 - Lunch
- 2:00 -3:15 - Final animal checks and final feed out
- 3:15 -3:20pm - End of day (change boots, sign out, put radio on charge)



DIVISION 2 – AUSTRALIAN FAUNA/MEERKATS

Shifts times	7:00am - 1:15pm
Commitment	12 months. Successful applicants will be expected to attend all rostered shifts, with the exception of sickness, holidays or special events.
Shifts available	1 regular day per week OR 1 regular day per fortnight Monday to Sunday
Duration	12 Months with option to re-apply

Key information – Division 2



**Average of 15,000
steps per day**



**Guest Experience
focus - talking to
guests**



**Working in with
Animals**



**Physically
demanding**

The volunteer role:

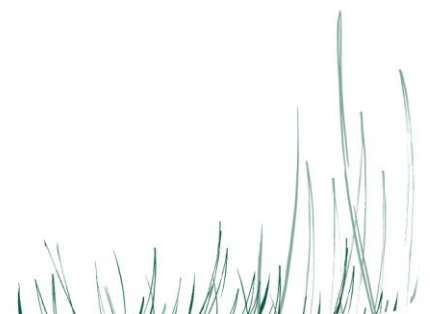
- Volunteers must be physically fit and capable of working the entire shift
- Cleaning equipment & windows
- Raking and spot cleaning enclosures and sweeping pathways
- Working alone or as a team and following instructions
- Volunteers will be working alongside the Keepers in all conditions – Rain, hail or shine
- Browse changes
- Food preparation and washing up
- Animal observations
- Creating and providing enrichment for animals

Animals on this Division:

- Kangaroos & Wallabies
- Koala
- Meerkats
- Quokkas
- Echidnas
- Emu
- Farm animals

What does an average day look like?

- 7:00 -7:15am - Arrive at the office, sign in collect radio and join the div 2 morning meeting
- 7:15 -10:45 - **Aussie walkthrough:** Assist with diet prep, browse collection and husbandry such as feeding and cleaning within the Australian walkthrough.
- 7:15 -10:45 - **OR Goat section:** Assist keepers with cleaning the goat exhibit, browse cutting, feeding and conditioning animals
- 7:15 -10:45 - **OR Meerkats:** Assisting keepers with cleaning and raking the meerkat enclosures
- 10:45 -11:10 - Morning Tea
- 11:10 -1:15 - Assist keepers further with husbandry tasks
- 1:15pm - Return radio and sign off for the day



DIVISION 3 – MIXED EXOTICS

Shifts times	7:00am - 3:20pm
Commitment	12 months. Successful applicants will be expected to attend all rostered shifts, with the exception of sickness, holidays or special events.
Shifts available	1 regular day per week OR 1 regular day per fortnight Monday to Sunday
Duration	12 Months with option to re-apply

Key information – Exotics



**Average of 15,000
steps per day**



Lots of cleaning



**Outdoors rain, hail or
shine**



**Minimal hands on
animal contact**

The volunteer role:

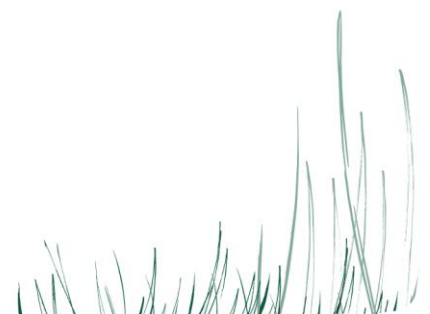
- Volunteers must be physically fit and capable of working the entire shift
- Cleaning windows & dishes
- Cleaning and raking exhibits
- Some office project work
- Volunteers will be working alongside the Keepers in all conditions – Rain, hail or shine
- Enrichment preparation
- Food preparation
- Some Animal observations

Animals on this Division:

- Black Rhino
- African Wild dogs
- Cheetah
- Galapagos Tortoise
- Asian Small Clawed Otters
- Greater One Horned Rhino

What does an average day look like?

- 7:00am - Arrive at the office, sign in and collect radio, join morning meeting
- 7:10-10:50 - Clean windows, assist keeper with morning enclosure clean, food prep and animal husbandry
- 10:50-11:10 - Morning Tea.
- 11:10-1:15 - Browse collection, enrichment prep & animal observations.
- 1:15-2:00 - Lunch.
- 2:00-3:20 - Office work, afternoon food preparation, feed outs & observations
- 3:20pm - Home time! Thank you for your help!



DIVISION 4 - ELEPHANTS

Shifts times	7:00am - 3:20pm
Commitment	12 months. Successful applicants will be expected to attend all rostered shifts, with the exception of sickness, holidays or special events.
Shifts available	1 regular day per week Monday to Sunday
Duration	12 Months with option to re-apply

Key information – Elephant Division



**Average of 15, 000
steps per day**



Lots of cleaning



**Minimal hands on
animal contact**



Indoor & Outdoor Work



**Physically
demanding**



Teamwork

The volunteer role:

- Volunteers must be physically fit and capable of working the entire shift.
- Volunteers will be working alongside the keepers in all conditions – rain, hail or shine.
- Heavy cleaning and raking involved
- Able to work both independently and in a team environment
- Preparing animal diets & enrichment.
- No allergies to hay or peanuts

Animals on this Division:

- Asian Elephants

What does an average day look like?

6:50-7:00am	- Sign in and collect radio from office
7:00-10:45	- Drive through zoofari back of house to meet elephant team at the elephant office for 7:00am start time. Begin morning husbandry routine this includes raking, shovelling, putting out diets and lots of lifting.
10:45-11:00	- Morning tea.
11:00-1:00	- Continue husbandry tasks ranging from preparing diets, browse cutting, and general cleaning
1:00-1:40	- Lunch
1:40-3:20	- Continue to assist in husbandry routines, ranging from providing diets and enrichment for elephants
3:20pm	- End of Day. Thank you for your help!



DIVISION 5 – EDUCATION & CONSERVATION

Shifts times	8:00am – 1:15pm
Commitment	12 months. Successful applicants will be expected to attend all rostered shifts, with the exception of sickness, holidays or special events.
Shifts available	1 regular day per week Monday to Sunday
Duration	12 months with an option to re-apply

Key information – Education & Conservation Division



**Average of 10, 000
steps per day**



Teamwork



**Attention to
detail/following
instructions**



**Working in with
animals**

The volunteer role:

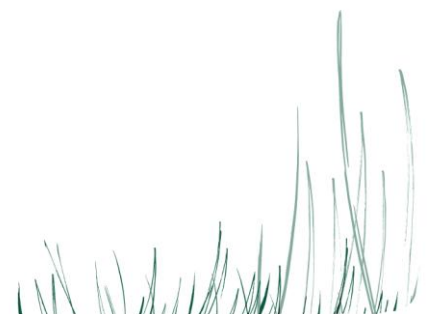
- Volunteers must be physically fit and capable of working the entire shift
- Cleaning exhibits, equipment & windows
- Volunteers will be working alongside the Keepers in all conditions – Rain, hail or shine
- Food preparation and washing up
- Animal observations

Animals on this Division:

- Reptiles
- Amphibians
- Insects
- Birds
- Education centre animals
- Australian Native conservation programs

What does an average day look like?

- 8:00-10:50am - Arrive at the Education Centre, assist Keeper with food preparation, daily checks, and general husbandry and cleaning of animal exhibits.
- 10:50-11:10 - Morning Tea
- 11:10-1:15 - Assist with other cyclic maintenance for the section. Assist with animal training/conditioning.
- 1:15pm- - Finish. Thank you for your help!



TWPZ WILDLIFE HOSPITAL

Shifts times	8:00am - 4:00pm
Commitment	12 months. Successful applicants will be expected to attend all rostered shifts, with the exception of sickness, holidays or special events.
Shifts available	1 regular day per week OR 1 regular day per fortnight Monday to Sunday
Duration	12 Months with option to re-apply

Key information – TWPZ Wildlife Hospital



**Average of 12-18,000
steps per day**



**Attention to
detail/following
instructions**



Lots of cleaning



**Minimal hands-on
animal contact**

The volunteer role:

- Volunteers must be physically fit and capable of working the entire shift, every shift
- Cleaning enclosures, dishes & tools
- Sweeping dens and holding yards
- Collecting suitable browse species
- Volunteers will be working alongside the Keepers in all conditions – Rain, hail or shine
- Browse changes
- Food preparation for all types of diets!
- Animal observations

Animals on this Division:

- Birds: e.g. Kookaburras, magpies, parrots, birds of prey
- Reptiles including turtles & lizards
- Possums & gliders
- Macropods: wallabies, kangaroos and koala
- Zoo collection animals
- Any species requiring quarantine (coming to or leaving Taronga)

What does an average day look like?

- 8:00-10:50am - Arrive at the office, change into your zoo shoes, collect food. Accompany nurse on rounds to check all patients, food preparation and treatments and clean enclosures.
- 10:50-11:10 - Morning Tea.
- 11:10-1:15 - Continue cleaning enclosures, afternoon food preparation, housekeeping tasks including sweeping, cleaning and laundry or browse collection.
- 1:15-2:00 - Lunch
- 2:00-4:00 - Finalise food preparation, laundry, clean tools, empty and clean bins, clean down kitchen.
- 4:00pm - Home time! Thank you for your help!



