

WHOSE POO IS WHOSE?

WHAT YOU WILL NEED:

- 1x Animal clue cards, printed or displayed digitally
- 1x Animal poo sample images, printed or displayed digitally
- 1x Printed copy of the student worksheet for each student or group

LESSON GUIDE:

- Scientists can tell a lot about an animal's diet by looking at its poo. Facilitate a discussion with students about this. What might give away clues to the animal's diet?
- Watch the 'Lockdown Lesson' 'Whose Poo is Whose?' to learn more about each animal and its diet.
- As a class, look over the animal clue posters. Discuss what each animal poo might contain and what shape, size and colour it may be.
- Allow students some time to discuss these clues with their group.
- Provide each group with a poster containing the images of the animal poo samples to look over. Then, have them record their guesses on their worksheet.
- As a class, discuss some of the ideas students came up with during their independent research and their decisions.
- Reveal the answers and discuss findings!

USEFUL WEBSITES:

<https://www.environment.sa.gov.au/goodliving/posts/2018/02/animal-poop>

<https://leftbraincraftbrain.com/animal-poop-lesson-plan/>

<https://www.earthrangers.com/top-10/top-ten-facts-all-about-animal-poop/>

WOMBAT

Wombats spend between 3 and 8 hours each night grazing on their favourite food, which is native grasses such as the tussocky 'snow grass', wallaby grass and kangaroo grass.

*Hidden Clue:

Wombats use piles of their poo to mark their territory. Their poo is a specific shape to stop it from rolling away.



DIAMOND PYTHON

Diamond Pythons consume a wide range of mammals. Their diet consists mainly of small rodents such as rats, mice, bats and rabbits. They constrict their prey and eat them whole.

*Hidden Clue:
Snakes can not digest the fur or bones of the prey they consume.



Catholic Education
Diocese of Parramatta



Education



For the Wild

LESSER SOOTY OWL

Lesser Sooty Owls mostly hunt small mammals like rats, mice, bandicoots and rabbits. They hunt at night and consume their prey whole.

*Hidden Clue:

STOP! We have to tell you a little secret. What you are looking for is actually not owl poo, it's owl PUKE!

Owls can not digest the fur or bones of their prey. After consuming their prey, the undigested parts are packed into a roundish ball named and 'owl pellet', which they spit back up a few days later.



KOALA

Koalas are very picky eaters. They are one of the only animals on the planet that can survive solely on eucalyptus leaves full of poisonous toxins. Koalas eat between 250-500g of leaves a day. Before eating each leaf, Koalas use their highly trained noses to determine if the leaf is safe to eat.

*Hidden Clue:

Koala poo is usually dark green/yellow in colour.



COTTON TOP TAMARIN

Cotton Top Tamarins are small monkeys found in the rainforests of Columbia, searching for prey in the middle and lower canopy. They consume a wide range of foods such as insects, flowers, fruits and small reptiles.

*Hidden Clue:

Tamarin poo is usually dark in colour. Sometimes you can see seeds from fruits they have eaten.



POO CLUE SAMPLES

Below are samples of poo from the five animals listed above in the clue cards. There is a picture of the poo whole, as well as what it looks like when broken up to see its contents. Use the photos and the clues to help you match the correct poo to the animal that owns it!

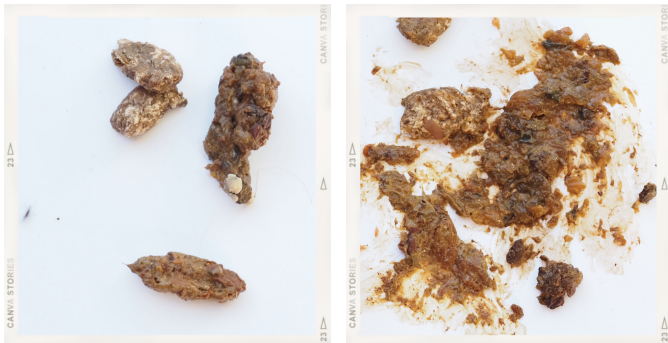
ANIMAL 1



ANIMAL 2



ANIMAL 3



ANIMAL 4



ANIMAL 5



STUDENT WORKSHEET

Write down your answers in the boxes below to indicate whose poo you have guessed the images belong to, as well as what led you to your conclusion.

Animal 1 _____

What helped you decide?

Animal 2 _____

What helped you decide?

Animal 3 _____

What helped you decide?

Animal 4 _____

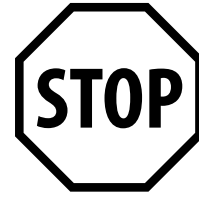
What helped you decide?

Animal 5 _____

What helped you decide?



ANSWER SHEET



Spoiler Alert!

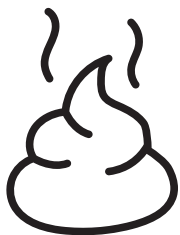
Do not look at this page until you have completed the activity.

ANIMAL 1- WOMBAT

ANIMAL 2-KOALA

ANIMAL 3-COTTON TOP TAMARIN

ANIMAL 4- LESSER SOOTY OWL



ANIMAL 5- DIAMOND PYTHON

