



## Secondary Teachers: spend a day at the zoo with your students.

Up to 90 students for the day (30 students per session)

Students rotate between 3 sessions, mapped to the NSW curriculum.

Cost: \$22 per student (Schools in the LGAs of Narromine, Mid-Western & Dubbo Region: \$15)

Dates: Every Monday & Tuesday, Weeks 1 - 10 (excluding Wk 6) of Term 2, 2023 (bookings close end of Term 1, 2023)



**WAMBANGALANG**

*Environmental Education Centre*

### Year 7 day.

#### Theme: Water Health

Sessions = 45 mins each

- Welcome, Introductions & Orientation
- **Session:** What's in the Water? Biodiversity & Water Health
- **Session:** The Plastic Problem
- BREAK = 20 mins
- **Session:** Litter Free Rivers
- Wrap Up + Self Paced Zoo Exploration

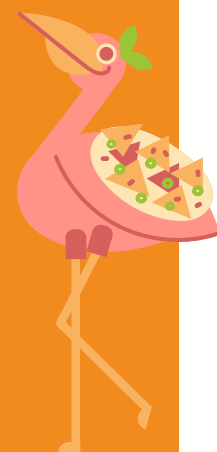


### Year 8 day.

#### Theme: Waste

Sessions = 45 mins each

- Welcome, Introductions & Orientation
- **Session:** Backyard Waste Solutions
- **Session:** Fight Against Food Waste
- BREAK = 20 mins
- **Session:** What's the Scoop with Poop?
- Wrap Up + Self Paced Zoo Exploration



### Year 9 day.

#### Theme: Human Impact

Sessions = 45 mins each

- Welcome, Introductions & Orientation
- **Session:** Human Impact & Water Management
- **Session:** Pollution and Wildlife
- BREAK = 20 mins
- **Session:** Fire Management
- Wrap Up + Self Paced Zoo Exploration



### Year 10 day.

#### Theme: Positive Impacts

Sessions = 45 mins each

- Welcome, Introductions & Orientation
- **Session:** Nature & Human Impact
- **Session:** Circular Economy
- BREAK = 20 mins
- **Session:** Human Wellbeing: How's Life?
- Wrap Up + Self Paced Zoo Exploration



**FOOD:** Recommended students pack their lunch.

Alternatively, if you wish to pre-order lunch packs, please advise in your booking request.




**CONTACT** Zoo Education Office to make a booking.

**EMAIL:** twpzeducation@zoo.nsw.gov.au

**PHONE:** 8681 1433

Risk Assessments will be sent through once the visit has been confirmed.

**Eligible LGA Secondary Schools (\$15 per student):** Dubbo College, Wellington High School, Narromine High School, Mudgee High School, Gulgong High School, Kandos High School, Trangie Central School, Dubbo School of Distance Education, Mian School, Macquarie Anglican Grammar School, St Johns College, Central West Leadership Academy, Dubbo Christian School, St Mary's Catholic School, St Matthews Catholic School.


Year 7


**Geography Outcomes**

- GE4-2
- GE4-3
- GEE4-4
- GE4-5

**Science Outcomes**

- SC4-1VA
- SC4-5WS
- SC4-6WS
- SC4-7WS
- SC4-8WS
- SC4-14LW
- SC4-15LW


Year 8


**Science Outcomes**

- SC4-1VA
- SC4-5WS
- SC4-13ES
- SC4-7WS
- SC4-15LW

**Geography Outcomes**

- GE4-2
- GE4-3
- GE4-5


Year 9


**Geography Outcomes**

- GE5-3
- GE5-2
- GE5-5

**Science Outcomes**

- SC5-6WS
- SC5-7WS
- SC5-14LW

Year 10


**Geography Outcomes**

- GE5-3
- GE5-4
- GE5-6
- GE5-2
- GE5-5

**Science Outcomes**

- SC5-2VA
- SC5-8WS

**PDHPE**

- PD5-1
- PD5-3

**9:30 am** Welcome, Introductions & Orientation,    **10:00 am** Session 1,    **11:00 am** Session 2,    **12:00 pm BREAK**    **12:20** Session 3,

**1:20 pm** Wrap up + Self-Paced Zoo Exploration / LUNCH

*(15 min has been allowed for students & teachers to move between session locations)*