

# COVID SAFETY PLAN – SCHOOL EDUCATION

Version 1.3 – 23 October 2020



Taronga is committed to keeping you safe. Our site-wide and education specific COVID Safety Plans have been developed under advice sought from NSW Health, State & Federal Governments, and NSW Department of Education. Safety is our priority and when your school visits Taronga Zoo Sydney, our plans are in place to keep you safe, along with our staff, volunteers, and of course, our animals.

To find out more about what Taronga Zoo is doing to keep you and your students safe during your visit, [visit our website](#). The plan is constantly monitored and will be updated accordingly.

## WHAT WE'RE DOING TO KEEP YOU SAFE

### Wellbeing of Staff, Students, and Guests

- Taronga is a certified COVID Safe location.
- Guests are not permitted to visit Taronga Zoo or stay overnight if it contravenes State or Federal travel restrictions, border closures, and public health orders relating to COVID-19 hotspots.
- Taronga has implemented COVID Safe wardens, staff, additional signage, distance markers and announcements to remind all guests on how to remain COVID safe.
- Taronga's friendly staff all wear masks when interacting with guests.



### Physical Distancing

- Guest capacity is limited each day, all transactions are contactless, keeper talks are offered in an engaging virtual way, and safe distancing is managed across the Zoo site.
- All guests are required to remain at least 1.5m away from fellow guests and staff. School students are not required to be physically distant from each other but must keep a safe 1.5m distance from all guests, staff and other school groups.

### Hygiene & Cleaning

- Taronga is implemented increased cleaning throughout the Zoo, with a focus on food and dining areas, bathrooms, high-frequency contact points, and includes enhanced cleaning in Taronga Education facilities.
- Additional hand washing and hygiene sanitisation stations are readily located throughout the Zoo, including additional sanitisation points in Taronga Education facilities.
- Taronga Education facilities and resources are thoroughly disinfected following each use.

### Record Keeping

- Contact Tracing measures are in place for all guests, staff, volunteers, and contractors at Taronga Zoo. A nominated attending school staff member is required to complete the Excursion Registration Form communicated with them directly from Taronga Education Admin prior to their visit. They are responsible for providing the names and contact details of all participating adults and students if required by NSW Health, in the event of a positive or suspected COVID-19 case.

## WHAT STAYING COVID SAFE MEANS FOR SCHOOLS

### Wellbeing of Staff, Students, and Guests

- In line with advice for school attendance, staff and students must not attend work/school if they are unwell, including displaying even minor flu-like symptoms. In the event of a student or staff member becoming unwell during the excursion, they will be isolated immediately and provided with PPE. We ask that schools include a strategy for addressing this situation and facilitating student collection in their excursion risk management planning.

### Physical Distancing for School Students and Teachers

- Education Programs are conducted in accordance with NSW Government guidelines on Schools & Childcare. Students do not need to follow adult physical distancing guidelines but a safe physical distance of 1.5m must be maintained between staff and students, including during education workshops. This means that currently, our workshops involve no contact between students and animals.
- When exploring Taronga Zoo, student groups of less than 30 work well. They allow great vantage points and viewing experiences at each precinct and make moving between locations easy and safe.
- Come prepared with strategies if crowding occurs. We ask that supervising teachers and adults monitor that students are being respectful of Taronga guests, ensuring a safe and positive experience for all. Our Taronga staff members are always to provide helpful suggestions to support a great day out for all.

### Hygiene & Cleaning

- While Taronga has provided increased hand sanitisation stations throughout the site, school staff and students are encouraged to bring their own personal hygiene kit, and thoroughly wash hands or sanitise regularly, especially before and after meals.
- Resources, clothing, food and drink should not be shared between students, and staff. Ensure that each individual student has their own water bottle, which can be refilled at stations throughout the Zoo, and adequate sun protection to minimise risk associated with sharing.

## YOUR EXCURSION ARRIVAL EXPERIENCE

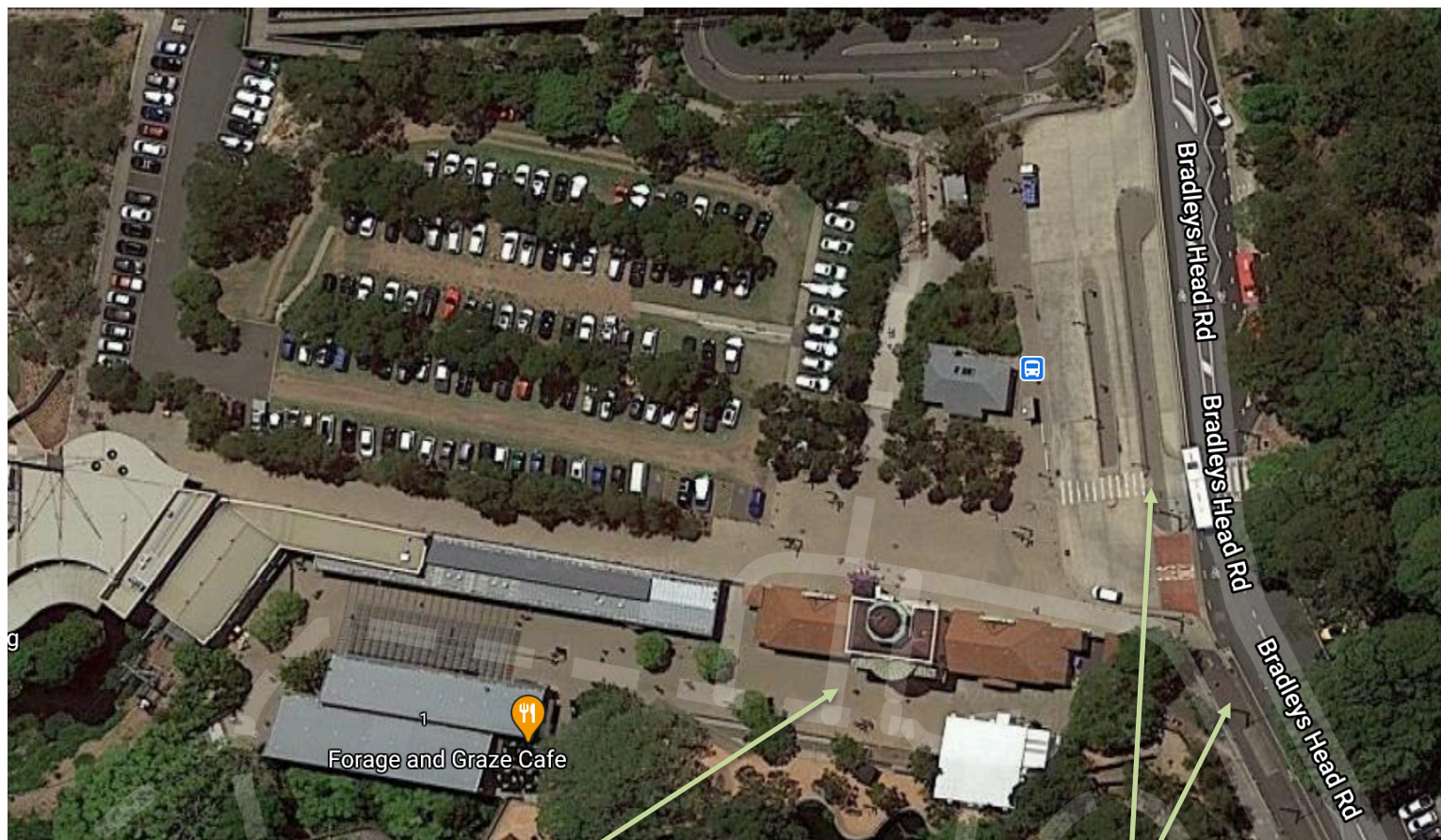
The Taronga Education team is committed to making your day at the Zoo as seamless as possible. We have implemented several important changes to our school arrival procedure to assist with streamlining your day.

- Your school will be greeted by a Taronga Education COVID Marshall as you arrive at the main Taronga Entrance Plaza, on Bradleys Head Road, who will assist with getting you prepared for your day. Please remain on your bus with your students until you are met by our team member. This will allow for a smooth disembarking, group mustering and entry into Taronga Zoo. If you are planning your arrival after 10:15am, please notify Taronga Education Admin to ensure a team member is there to meet you.
- We recommend that you deliver all important announcements whilst still on the bus, and have students already seated in their Zoo groups, to allow easy exiting as smaller groups who will then be guided directly into Taronga and to avoid large group mustering outside the Zoo entrance.
- Entry into the Zoo grounds will be managed by your COVID Marshall, to help avoid the crowded, busy area of the main Entrance Plaza. They can happily assist with basic wayfinding and key reference locations once in the Zoo to help get you and your students started on your Taronga experience.

# TARONGA EDUCATION'S STOP COVID SAFE TIPS

- Download the [COVIDsafe app](#).
- Where possible, use the bathroom amenities located at Backyard to Bush/Concert Lawns (Map C5), or the new African Savannah amenities (Map H11), as these allow additional space for group mustering nearby and receive enhanced cleaning specifically for Taronga Education. Downloading the free [Taronga Zoo App](#) is the easiest way to find your way around the Zoo!
- Suggested morning tea/lunch locations are the Concert Lawns (Map D5) and Harbour View Lawns (E15). Both allow space to spread out, and spectacular views. Please remind students to not feed the birds and wildlife.
- If attending a show at Taronga Zoo, be sure to arrive early, be respectful of other guests and maintain 1.5m distance at all times, and follow the guidance of our helpful staff who can assist with escorting you and your students to seating designated for school groups, if not already at capacity.
- Staying in smaller groups improves the Zoo experience for everyone, especially around popular exhibits, food & beverage precincts, and when walking around the Zoo. Did you know that safely staying 1.5m away from others is about the same length as the neck of a giraffe!
- Have fun! Staying COVID safe is everyone's responsibility and Taronga Education appreciate your support in ensuring that Taronga Zoo remains a safe and inspirational location for all!

## TARONGA ZOO SYDNEY - EDUCATION ARRIVAL MAP



Taronga Entrance Plaza and Heritage Arches

School Bus Drop Off Zone