

# COVID-19 SAFETY PLAN – WORK EXPERIENCE

Version 1 – 3 November 2020



Taronga is committed to keeping you safe. Our site-wide and education specific COVID-19 Safety Plans have been developed under advice sought from NSW Health, State Government, and NSW Department of Education. Safety is our priority and when your school visits Taronga Zoo Sydney, our plans are in place to keep you safe, along with our staff, volunteers, and of course, our animals.

To find out more about what Taronga Zoo is doing to keep you safe during your visit, [visit our website](#). The plan is constantly monitored and will be updated accordingly.

## WHAT WE'RE DOING TO KEEP YOU SAFE

### Wellbeing of Students, Guests and Taronga Team Members

- Taronga is a COVID-19 Safe Business and has a comprehensive COVID-19 Safety Plan.
- Guests are not permitted to visit Taronga Zoo or stay overnight if it contravenes State or Federal travel restrictions, border closures, and public health orders relating to COVID-19 hotspots.
- Taronga has implemented COVID-19 Safe wardens, additional signage, distance markers and announcements to remind all guests on how to remain COVID-19 safe.
- Taronga's COVID-19 Safe Plans and operations are regularly reviewed to minimise the risk to guests and our team.



### Physical Distancing

- Guest capacity is limited each day, all transactions are contactless, keeper talks are offered in an engaging virtual way, and dedicated COVID-19 Safe Wardens assist in managing physical distancing.
- All guests work experience students are asked to remain at least 1.5m away from fellow guests and staff and are reminded with regular announcements during operating hours.

### Hygiene & Cleaning

- Taronga has implemented increased cleaning throughout the Zoo, with a focus on food and dining areas, bathrooms and high-frequency contact points. This includes enhanced cleaning in Taronga Education facilities.
- Additional hand washing and hygiene sanitisation stations are readily located throughout the Zoo, including additional sanitisation points in Taronga Education facilities.
- Taronga facilities and resources are thoroughly disinfected following each use.

### Record Keeping

- Contact Tracing measures are in place for all guests, staff, volunteers, and contractors at Taronga Zoo. Work Experience students will be expected to sign in and sign out every day via our digital visitor registration system at security. This process will be demonstrated by the Work Experience Coordinator on the Monday morning.

## WHAT STAYING COVID-19 SAFE MEANS FOR WORK EXPERIENCE STUDENTS

### Wellbeing of Students, Guests and Taronga Team Members

- In line with advice for school attendance, staff and students must not attend their work experience placement at Taronga Zoo if they are unwell, including displaying even minor flu-like symptoms. In the event of a student becoming unwell during the excursion, they will be isolated immediately and provided with PPE. The Work Experience Coordinator will arrange for the parent or carer to collect the student from Taronga Zoo as soon as possible.

### Physical Distancing for Work Experience Students and Zoo Staff

- A physical distance of at least 1.5m must be maintained between Taronga Zoo staff and work experience students at all times during the placement.
- When exploring Taronga Zoo, students are encouraged to maintain a physical distance of at least 1.5m from guests.

### Hygiene & Cleaning

- While Taronga has provided increased hand sanitisation stations throughout the site, work experience students are encouraged to bring their own personal hygiene kit, and thoroughly wash hands or sanitise regularly, especially when working with animals, preparing food or cleaning enclosures.
- Resources, clothing, food and drink should not be shared between work experience students, and staff. Ensure that each individual student has their own water bottle, which can be refilled at stations throughout the Zoo, and adequate sun protection to minimise risk associated with sharing.

## YOUR WORK EXPERIENCE ARRIVAL

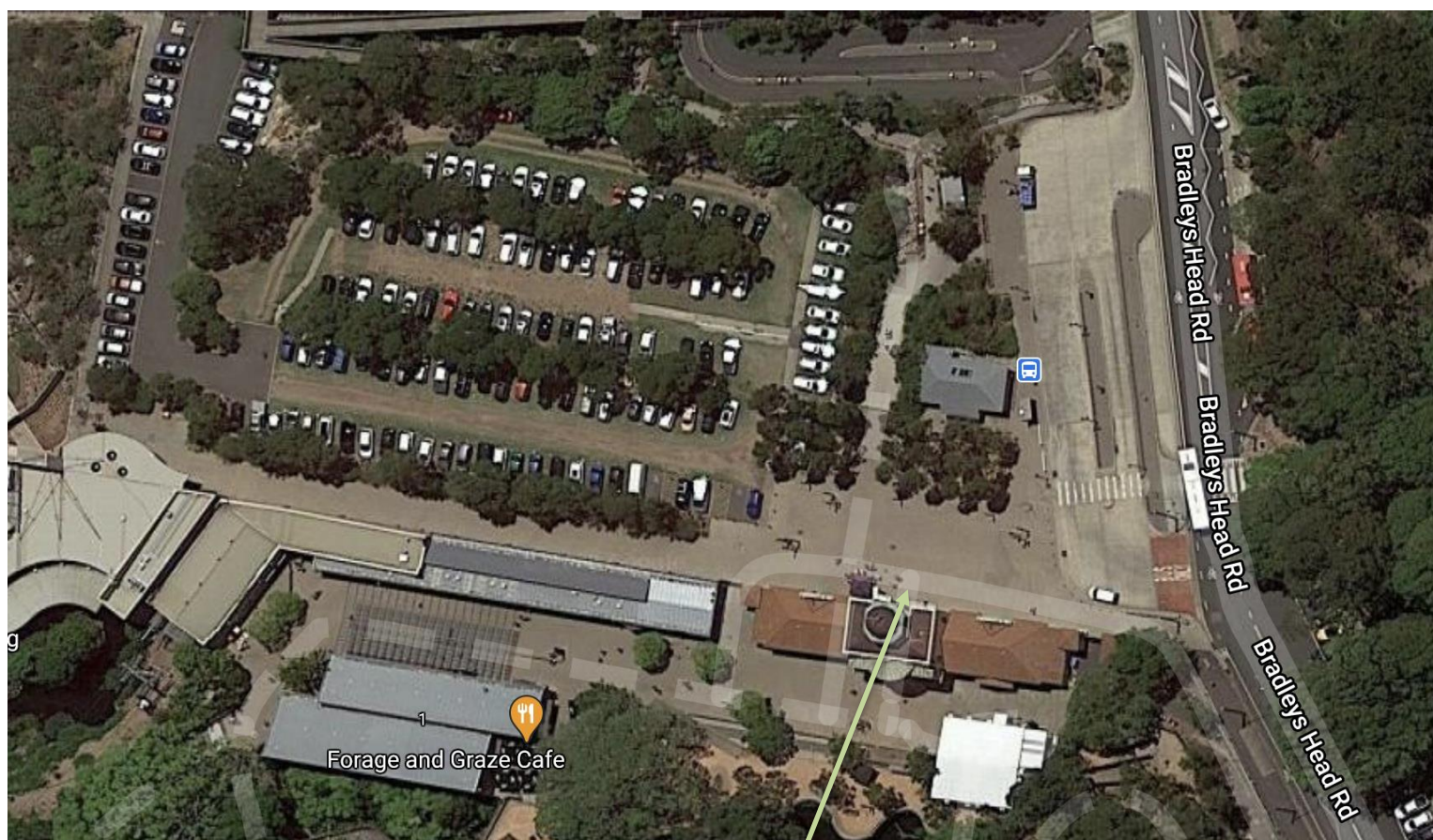
The Taronga Education team is committed to making your week at the Zoo as seamless as possible. We have implemented an important arrival procedure to assist with streamlining your day.

- On a Monday at 8:00am, you will be greeted by the Taronga Education Work Experience Coordinator as you arrive at the main Taronga Entrance Plaza, on Bradleys Head Road, who will assist with getting you prepared for your week.
- Work Experience students' entry into the Zoo grounds will be managed by the Work Experience Coordinator to mitigate the risk of crowding. They will take the students to their induction that will occur in the Institute of Learning and will communicate to parents where students can be collected at the end of the day.
- Work Experience students will then be taken to security and shown how they will sign in and out every day. They will then be taken to their divisions where they will be for the week.

# TARONGA EDUCATION'S TOP COVID-19 SAFE TIPS

- Download the [COVIDsafe app](#).
- Downloading the free [Taronga Zoo App](#) is the easiest way to find your way around the Zoo!
- Suggested morning tea/lunch locations, if you would like to venture out of the division into the zoo are, the Concert Lawns (Map D5) and Harbour View Lawns (E15). Both allow space to spread out, and spectacular views. Please do not feed the birds and wildlife.
- When you are attending the shows at Taronga Zoo, be sure to arrive early, be respectful of other guests and maintain 1.5m distance at all times, and follow the guidance of our helpful staff who can assist with escorting you to seating designated for work experience students.
- When you are walking around the zoo, be sure to maintain a 1.5m distance from guests and other Taronga Zoo staff members. Did you know that safely staying 1.5m away from others is about the same length as the neck of a giraffe!
- Have fun! Staying COVID-19 safe is everyone's responsibility and Taronga Education appreciate your support in ensuring that Taronga Zoo remains a safe and inspirational location for all!

## TARONGA ZOO SYDNEY - WORK EXPERIENCE ARRIVAL MAP



Taronga Entrance Plaza and Heritage Arches is where you will meet the Work Experience Coordinator at 8:00AM on the Monday morning