

ZOO FRIENDS *at* HOME: GREAT SOUTHERN OCEANS

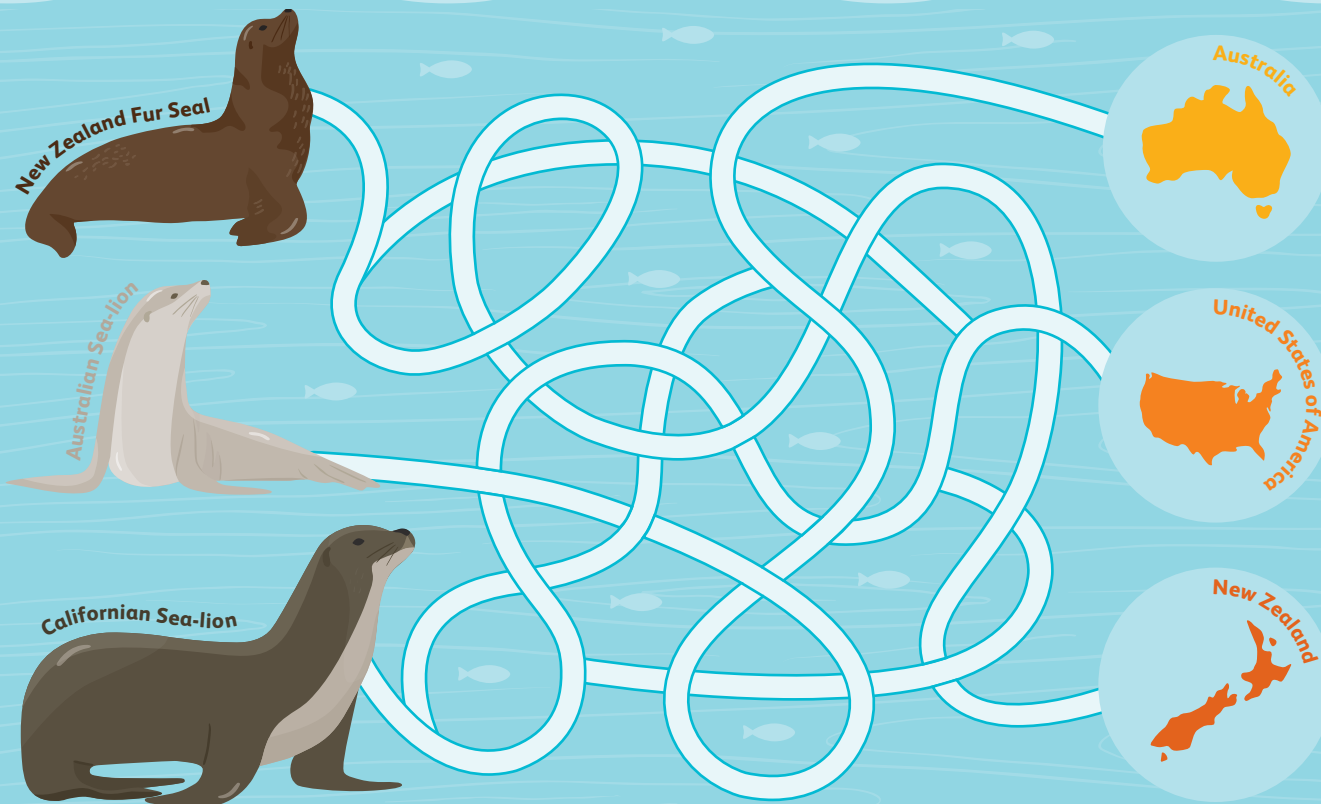
At Taronga Zoo Sydney, the Great Southern Oceans precinct is home to marine animals great and small, from seals to sea-lions and penguins to pelicans. Learn more about these marvellous animals that make their home in the Great Southern Oceans.



TARONGA
Zoo Friends

MARINE MAMMAL MAZE

Help some of Taronga's marine mammals trace their way back to where their species originated!



Slick Swimmers

A Californian sea-lion can swim at up to 40km/hr! Their powerful flippers propel them, and their shape and fur help them glide through the water with ease.



New Zealand v Australia

The *Arctocephalus forsteri*, better known by its common name, the New Zealand Fur Seal is also native to Australia! The species got its name as it was first described in New Zealand.



Seal or Sea-lion

The most obvious difference between true seals and sea-lions are their ears and flippers. Sea-lions have external ear flaps that stick out from their heads and long flippers that help them walk on land, while seals only have ear holes, and have short front flippers.



Fur-real?

While a fur seal is called a 'seal', it is actually a closer relative of a sea-lion than a true seal. Like sea-lions, fur seals have longer flippers and external ear flaps!

LEARN TO DRAW PENGUINS

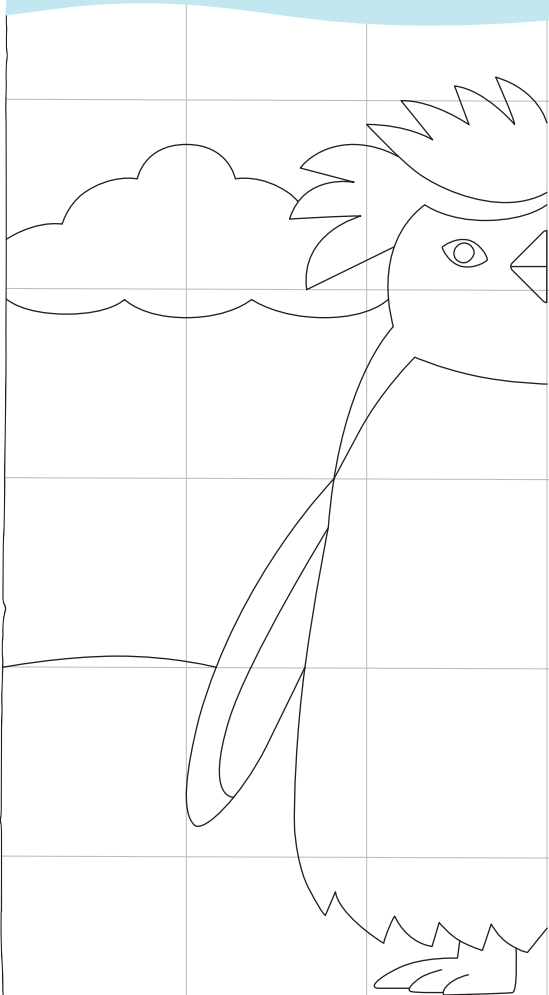
The Great Southern Oceans Precinct at Taronga is home to two different types of Penguins, Fiordland Penguins are native to New Zealand and have distinctive yellow crests above their eyes. Little penguins are the smallest species of penguin, typically growing to around 35cm tall and weighing in at 1.5kg! Try your hand at drawing these two very different penguin species!

Instructions:

1. Print out the sheet at home
2. Using the grid as a guide, try to draw the other half of both species of penguin
3. Colour in!



FIORDLAND PENGUIN



LITTLE PENGUIN

