

# THE EARTH'S ENVIRONMENT - COMPARING AUSTRALIA AND INDONESIA

Stage 2: Geography  
GE2-1, GE2-2, GE2-3



Explore the climate, native vegetation and animals of places in Australia and Sumatra. Examine the importance of habitats and natural resources to the environment, animals and people and learn about the ways people value environments, including Aboriginal and Torres Strait Islander Peoples. Identify sustainable practices and recognise that there are differing views on how sustainability can be achieved.

## OUTLINE

### AT SCHOOL

Begin an investigation into Australian and Sumatran environments; examine the unique features of the Australian and Sumatran habitats and the animals that depend on these environments.

### AT THE ZOO

Explore Asian and Australian trails and immerse yourself in Taronga's Tiger Trek to encounter first-hand the rich habitat of Asian animals. Discover how your everyday actions can help protect local and Asian species.

### ZOO WORKSHOP

In this workshop students will examine the climate, vegetation and native animals of Australia and Sumatra. They will learn about the importance of habitats for animals and people and discover the ways people value environments, including Aboriginal and Torres Strait Islander Peoples. The concepts discussed in this workshop can be strongly reinforced when visiting Tiger Trek at Taronga Zoo Sydney.



### BACK AT SCHOOL

Discuss natural resources provided by forests in Sumatra. Through learning about global forest habitats and the biodiversity within, students will be empowered to make informed sustainable choices about palm oil. Challenge your students to educate their community to purchase certified sustainable palm oil.





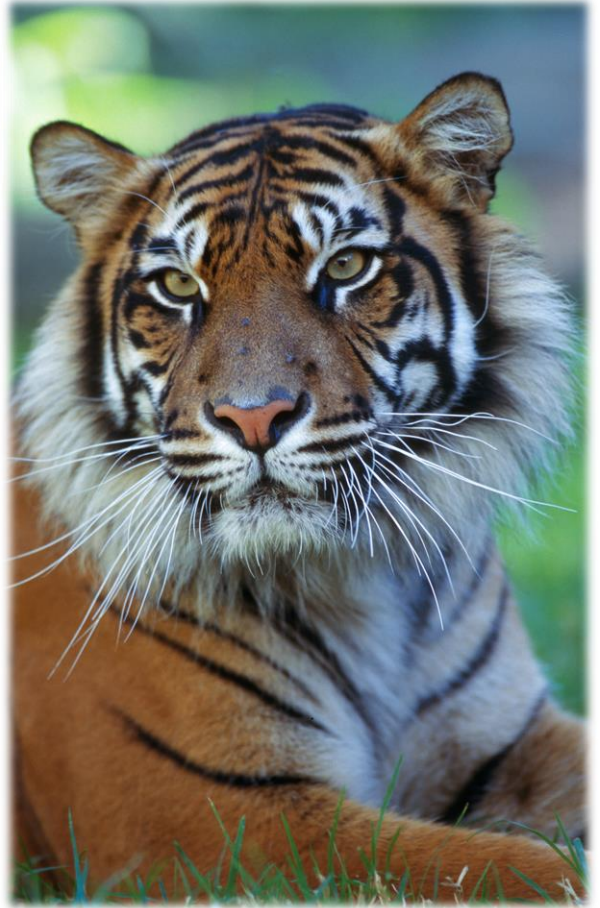
# AT THE ZOO

Get up close to native Australian animals at the Zoo and compare these to Asian species seen on the self-guided tour of the Asian trail and Tiger Trek.

## TIGER TREK SELF GUIDED TOUR

(map reference G14)

- Journey to Sumatra by small cargo plane and see the extent of deforestation from the plane window.
- Land in the small village of Way Kambas and see how rangers track tigers. Get up-close to the magnificent, critically endangered Sumatran Tigers.
- Finish your journey with a trip to the supermarket and learn about how your choices can save tigers.



## SUGGESTED TRAILS

### ASIAN RAINFOREST TRAIL

(map reference G13)

### AUSTRALIAN BLUE MOUNTAINS BUSH WALK

(map reference H5)

Bring Your Own Device (BYOD) to the Zoo and document your visit using [Book Creator](#) or [Sway](#) (part of Office 365). Collect images, drawings, text and even audio to document your day at Taronga Zoo.

Engaging directly with these breathtaking environments provides the perfect stimulus to further investigate the similarities and contrasting differences between these unique habitats.

## ZOO WORKSHOP

- Compare the features and characteristics of Australia's natural environment with that of Sumatra.
- Meet our native Australian wildlife and learn how people can use places and environments more sustainably.
- Identify sustainable practices, recognise that there are differing views on how sustainability can be achieved and hear about the connection between Aboriginal People and nature.

# BACK AT SCHOOL - AFTER THE ZOO

Discover more about palm oil through [The Guardian Palm Oil Interactive](#)

## EXPLORE DIFFERENT PERSPECTIVES

Work collaboratively to plan and present (eg. role play) **different perspectives of people to the environment** in relation to forest clearing in Sumatra for palm oil production. People with different perspectives may include:

- farmers
- local residents
- Indigenous community members
- palm oil companies
- environment advocates
- tourists
- tourism operators
- government.

For the group of people they are representing, students should consider what:

- their wants/needs are
- their feelings about the native forest
- the impact they will have on the environment
- the impact they will have on the local community.



## PRODUCTS THAT COMMONLY CONTAIN PALM OIL

**Food** - biscuits, bread, cakes, cereals, muesli bars, chips, chocolate, ice cream, margarine.

**Non food** - candles, cleansers, conditioners, deodorants, eye make-up, fabric softeners, foundations, hair dyes, hair removers, lipsticks, moisturisers, shampoos, shower gels, soaps, pharmaceuticals, washing powders.

## BE A CHANGE AGENT

Although using other vegetable oils may seem like a practical solution, it would actually create similar, if not larger, environmental and social problems. The best solution is to ensure you buy products that contain certified sustainable palm oil (CSPO), make the switch today.





# BACK AT SCHOOL - AFTER THE ZOO

## RAISE YOUR PALM

### YOUR CHOICE MATTERS

From your own research and your journey through Tiger Trek at the Zoo, compile a list of companies that use certified sustainable palm oil (CSPO) in their products.



Write a letter to the company congratulating them for using sustainable palm oil.

### CONSCIOUS CONSUMERS START AT SCHOOL

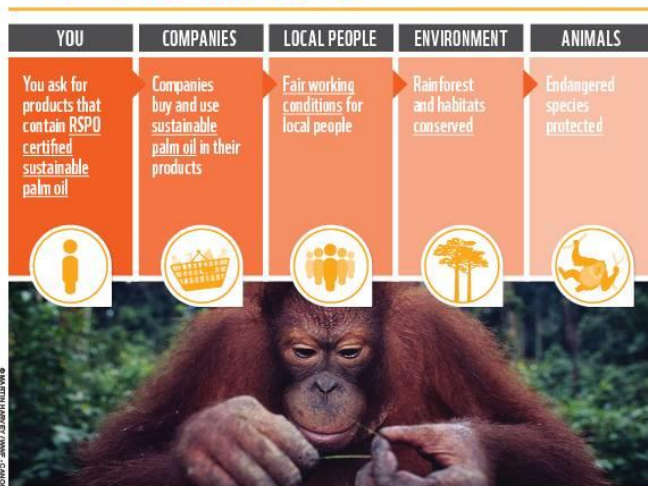
Audit your school canteen to determine which products are using good palm oil. For the products that contain non-sustainable palm oil, make recommendations to your canteen for replacement products that contain sustainable palm oil.

### GET YOUR MESSAGE OUT THERE

Use the free app [poster my wall](#) or iMovie to create an advertisement for certified sustainable palm oil (CSPO). Distribute the advertisement within your school network.



### SUSTAINABLE PALM OIL - THE DIFFERENCE IS YOU!



To find out more visit [www.org.au/palm\\_oil](http://www.org.au/palm_oil)

