

THE BUG GARDEN : PRE INVESTIGATION

Stage 1: Science & Technology

AT SCHOOL

My Group Name:

Where in the school grounds is my group investigating?

Today's Date:

Weather:

Hypothesize (guess) which garden in the school grounds will have the most total number of bugs or most different types of bugs. List the reasons you believe this.

Title: _____



Use the space above to draw the features of your group's invertebrate habitat.
Label your diagram with key features including water, food and shelter.

Some scientific techniques for undertaking invertebrate surveys include:

- beating
- sweeping
- hand searching
- spot sweeping

<http://www.gigl.org.uk/recording-surveying/survey-guidance/invertebrate-surveys/>

As a class, decide on which methods all groups will use, so that consistent methods allow for comparing results.

THE BUG GARDEN : INVERT CHECKLIST

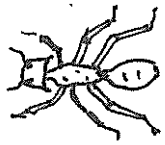
Stage 1: Science & Technology

AT SCHOOL

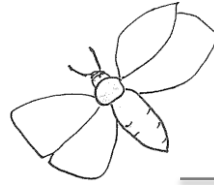
Record the presence of invertebrates you see by ticking the boxes.

Record the number (abundance) of each type of animal in the

Describe the habitat on the _____ (eg. Leaf litter/dead log)



Ants



Moths



Snails



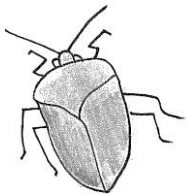
Cockroaches



Spiders



Butterflies



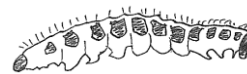
Beetles



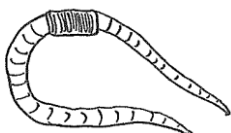
Grasshoppers



Flies



Caterpillars



Worms



THE BUG GARDEN : POST INVESTIGATION

Stage 1: Science & Technology

Use the table to capture the class data.

Invertebrate Type	Total number of all groups
Ants	
Moths	
Snails	
Cockroaches	
Spiders	
Butterflies	
Beetles	
Grasshoppers	
Flies	
Caterpillars	
Worms	

Construct a food chain/web using some of the invertebrates you have found in the garden.

Use the data you have gathered to explore ways the data could be represented.

As a class discuss the various habitats within the school grounds that have been investigated. Revisit your hypothesis to see how correct you were. What makes each of the habitats valuable/not so valuable in habitat importance. Talk about how each could be improved.

THE BUG GARDEN : IMPROVING OUR LOCAL ENVIRONMENT

Stage 1: Science & Technology

After your Zoo visit, apply the knowledge you have gained from your studies to create an informative and persuasive text to present to your SRC. Use the space below to plan and draft your information. You may like to include some of the graphs you have created as evidence.

Don't forget to reread and edit your text to check for spelling, grammar and punctuation.

